

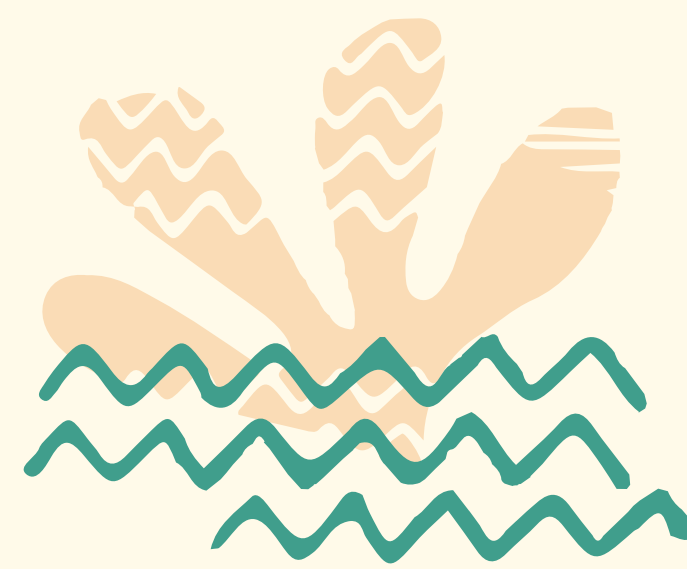


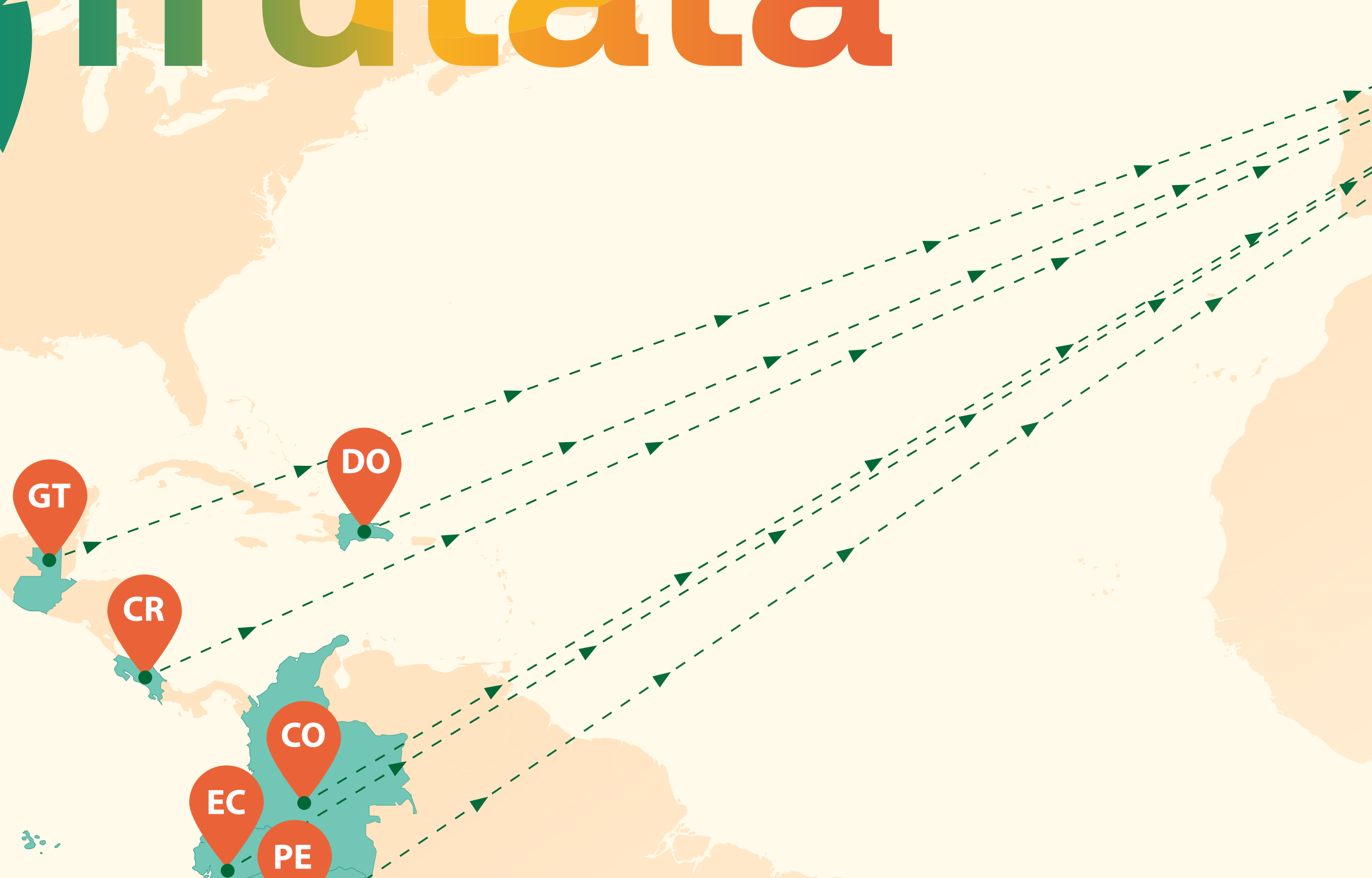
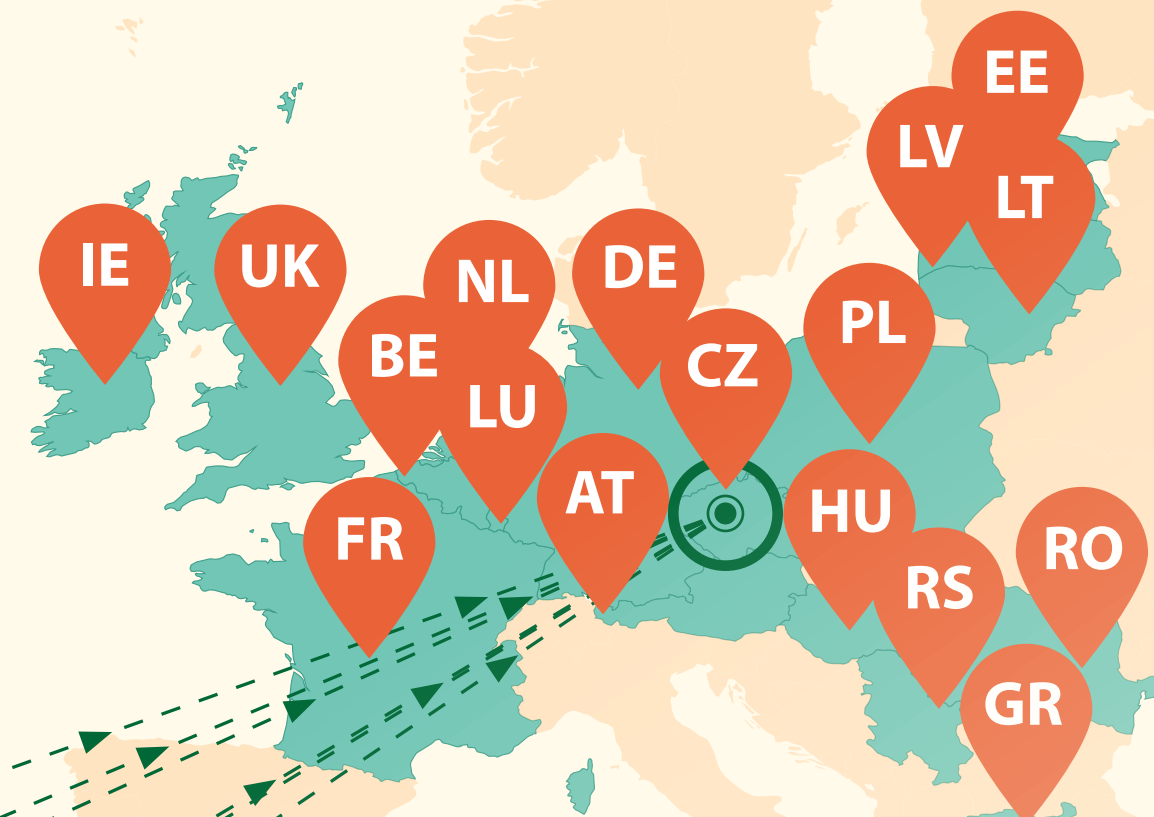
 **fruitata'**



frutata'

- Shares the **authentic taste of exotic fresh fruits** ripened in the sun with clients around the globe.
- Conveys a **healthy lifestyle** to anyone who wants to, without any restrictions.
- Offers the passion of a **sunny vacation** on a daily basis.
- **Connects humans and continents.**





Our fruits come from small and large farms.

Where farmers put their souls and feelings into their daily work.



MANGO



PRODUCT SPECIFICATIONS

Mango is a renowned tropical fruit native to Southeast Asia. It is the national fruit of India and in Hindu culture it is a symbol of prosperity and happiness. It is a fruit with a delicate and very sweet flavor.

HASS AVOCADO



PRODUCT SPECIFICATIONS

Avocado Hass avocados are ripe for immediate consumption. The Hass variety is the most delicious variety of avocado ever. The peel is bumpy, the color is mostly brown to brown-purple.

PAPAYA



PRODUCT SPECIFICATIONS

On the top shelf in the group of superfruits, high in vitamin C and antioxidants. So called ultimate detox fruit. Certain compounds in **papayas** may have anticancer properties.

AVOCADO VERDE



PRODUCT SPECIFICATIONS

Avocado monounsaturated fatty acids reduce bad cholesterol (LDL) and promote cardiovascular health.

PITAHAYA ROSA



PRODUCT SPECIFICATIONS

Also known as **Dragon Fruit**, due to its obvious appearance, the pitahaya is a fruit native to America, coming from a cactus. Its taste is sweet and slightly acid.

PITAHAYA AMARILLA



PRODUCT SPECIFICATIONS

Dragon fruit has been shown to improve glucose metabolism, keeping glucose levels stable in people with hyperglycemia and diabetes.

PINEAPPLES



PRODUCT SPECIFICATIONS

This delicious fruit is very low in calories and very rich in vitamins and minerals. **Pineapple** aids in reducing weight and boosting the immunity. There are also other benefits such as help in digestion or lowering the cancer risk.

MARACUYA



PRODUCT SPECIFICATIONS

Also known as **Passion Fruit** is a good source of antioxidants, including vitamin A, vitamin C, beta-cryptoxanthin and carotenoids, as well as other minerals in small amounts. Maracuya is known for its beneficial skin antiaging agents.

BABY BANANA



PRODUCT SPECIFICATIONS

Also known as **Lady Finger or Sugar banana**. The sweetest of all bananas. Rich in potassium, fiber, vitamin C and magnesium. Together these nutrients support the nervous system, skin health and blood pressure.



**HASS
AVOCADO**

Shelf Life:
14 Days

**Maintenance
conditions:**
7 °C

Box (Net Weith):
2,50



BABACO

Shelf Life:
14 Days

**Maintenance
conditions:**
7 °C

Box (Net Weith):
3,00



**BABY
BANANA**

Shelf Life:
14 Days

**Maintenance
conditions:**
13-15 °C

Box (Net Weith):
3,00



**BABY
MANGO**

Shelf Life:
14 Days

**Maintenance
conditions:**
13 °C

Box (Net Weith):
3,00



**BANANA
PASSION**

Shelf Life:
14 Days

**Maintenance
conditions:**
10 °C

Box (Net Weith):
3,00



**BLUE
BERRIES**

Shelf Life:
8 Days

**Maintenance
conditions:**
10 °C

Box (Net Weith):
2,00



**CACTUS
FIG**

Shelf Life:
21 Days

**Maintenance
conditions:**
10 °C

Box (Net Weith):
3,00



FEIJOA

Shelf Life:
21 Days

**Maintenance
conditions:**
7 °C

Box (Net Weith):
3,00



FIG

Shelf Life:
7 Days

**Maintenance
conditions:**
5 °C

Box (Net Weith):
2,00



GRANADILLA

Shelf Life:
14 Days

**Maintenance
conditions:**
7 °C

Box (Net Weith):
2,00



GUAVA

Shelf Life:
21 Days

**Maintenance
conditions:**
7 °C

Box (Net Weith):
3,00



LULO

Shelf Life:
21 Days

**Maintenance
conditions:**
10 °C

Box (Net Weith):
3,00



MANGOSTEEN

Shelf Life:
14 Days

**Maintenance
conditions:**
12 °C

Box (Net Weith):
2,50



PHYSALIS

Shelf Life:
7 Days

**Maintenance
conditions:**
10 °C

Box (Net Weith):
2,00



**PURPLE
PASSION**

Shelf Life:
14 Days

**Maintenance
conditions:**
7 °C

Box (Net Weith):
2,00



**RED
PITAHAYA**

Shelf Life:
14 Days

**Maintenance
conditions:**
7 °C

Box (Net Weith):
4,50



SOURSOAP

Shelf Life:
7 Days

**Maintenance
conditions:**
7 °C

Box (Net Weith):
3,00



**SWEET
CUCUMBER**

Shelf Life:
28 Days

**Maintenance
conditions:**
7 °C

Box (Net Weith):
3,00



**TREE
TOMATO**

Shelf Life:
21 Days

**Maintenance
conditions:**
10 °C

Box (Net Weith):
3,00



**YELLOW
PASSION**

Shelf Life:
14 Days

**Maintenance
conditions:**
7 °C

Box (Net Weith):
3,00



**YELOW
PITAHAYA**

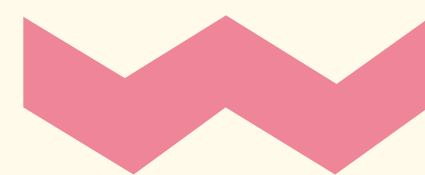
Shelf Life:
14 Days

**Maintenance
conditions:**
10 °C

Box (Net Weith):
2,50



*They are always delicious,
juicy, and flavorful.*



www.frutata.com

More about us here:

info@frutata.com

Za Sedmidomky 15 / 110 00 Praha 10
Czech Republic